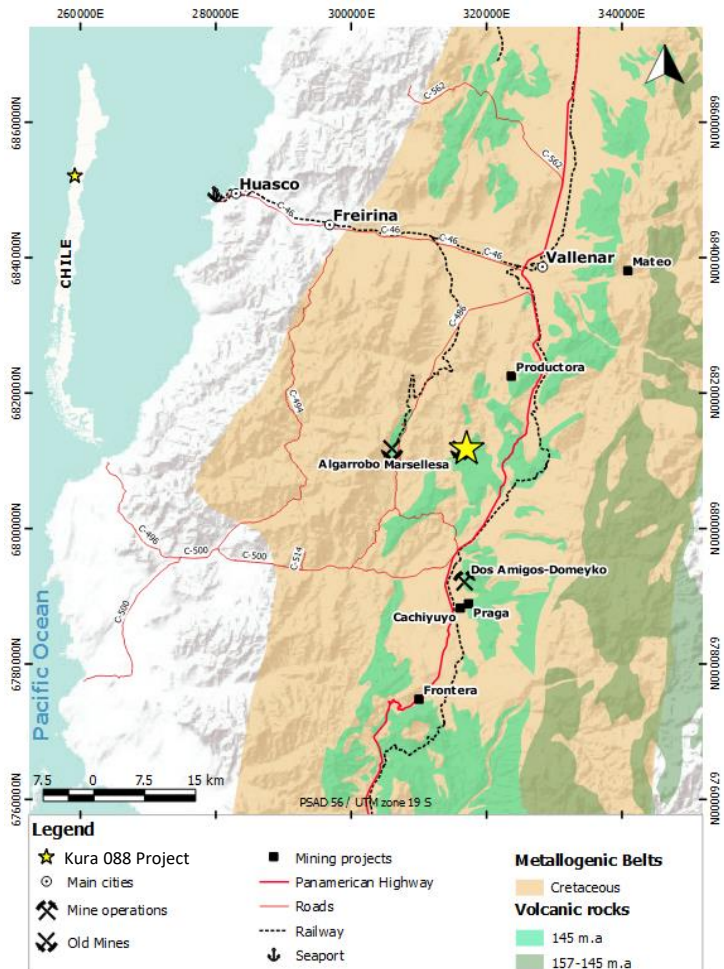


- **Opportunity to re-assess a project explored under bulk iron-rich IOCG model, driven predominantly by scale factors. Drill spaced between 500 to 1,000 m**
- **1.8 x 1.4 km target area with evidences of a Vein/ Stratabound Cu IOCG system. Several small-scale mines (Marsellesa) within the property confirms high grade copper endowment**
- **Second target comprehends a Tourmaline – Magnetite Breccia coincident with a 2.2 x 1 km magnetic anomaly at the volcanic and granodiorite contact**

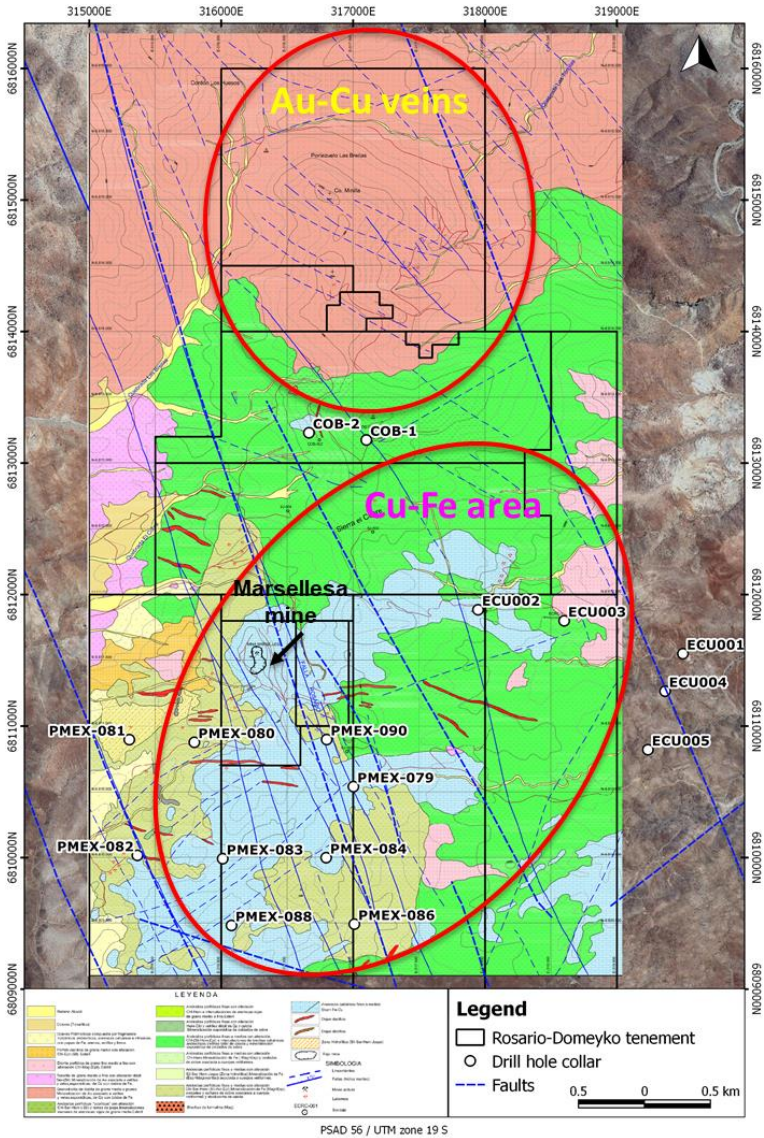
Exploration Highlights

- **Location:** Cretaceous IOCG - Porphyry belt, near to Dos Amigos-Domeyko Mine (56 Mt @ 0.5% Cu + Au) and 9 km southwest of Hot Chilli's (ASX:HCH) Productora Project (237Mt @ 0.48% Cu, 0.1 g/t Au and 135 ppm Mo).
- **Access:** 30 km south from Vallenar, Coquimbo Region.
- **Tenure Size:** 2,590 ha.
- **Deposit Type:** IOCG.
- **Development Stage:** Advanced exploration, 10 RC and 9 DDH totalizing 6,091m; mapping, geochemistry and 8IP-RES lines.
- **Best drill intercepts:**

DRILL-082: 10 m @ 0.55% Cu
 DRILL-083: 4 m @ 0.6% Cu+238 ppm Co
 DRILL-084: 6 m @ 0.5% Cu
 DRILL-088: 4 m @ 0.56% Cu



Project Upside



Target 2: North

- 2,200 x 1,000 m footprint.
- Contact between volcanic rocks and granodiorite unit.
- Outcropping tourmaline – magnetite breccia.
- Drilled until 200 m and intercepted calcareous sediments at depth.

Target 1: South Cu IOCG-Skarn

- 1,800 x 1,400 m footprint.
- Limestone outcrops.
- Mag anomalies and IP/RES surveys.
- 4 out of 9 DDH, with mineralized intercepts.

Potential for new skarn and Cu - IOCG occurrences. Exploration works performed to date are considered insufficient to fully understand the potential. Copper skarn deposits can be blind exploration targets since limestones quickly neutralize oxidized fluids without showing any evident footprint or alteration halo.